



Jakob Freund
Bernd Rücker
Real-Life BPMN

Представяне на книги на бизнес
анализ тематика

Jakob Freund
Bernd Rucker

Real-Life BPMN

With introductions to CMMN and DMN.

Analyze, improve and automate business processes in your company.



camunda
the business process company

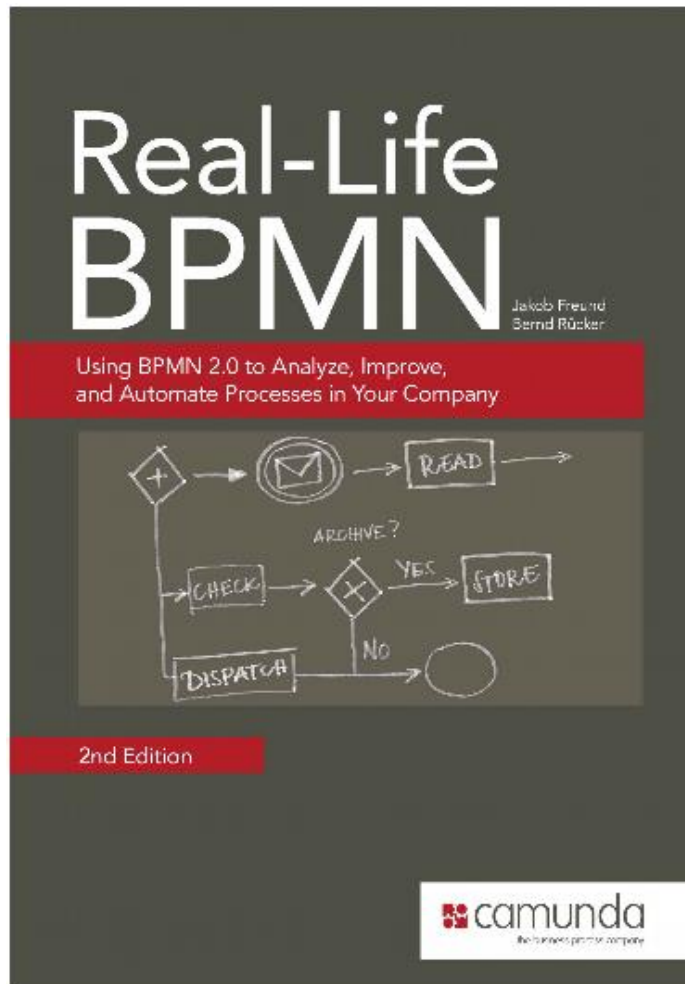
3rd edition

Ако трябва да прочетете една книга за BPMN, това е книгата

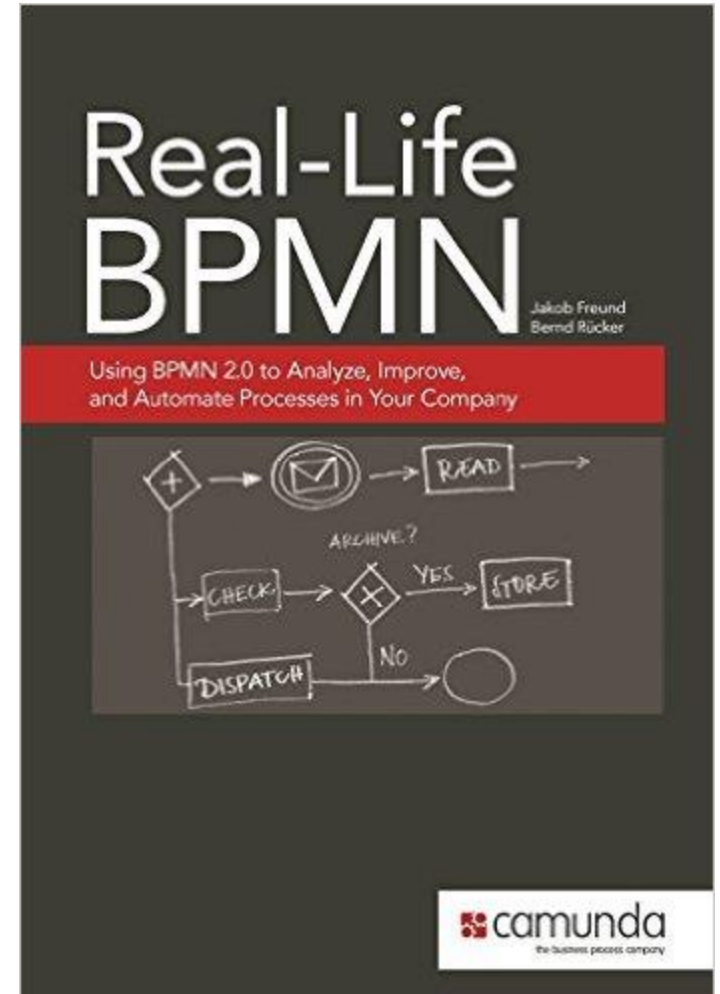
3rd edition, with introduction of CMMN and DMN, December 2016, 2000, CreateSpace Independent Publishing Platform

ISBN-13: 978-1541163447

Special thanks to our sponsors:



2nd edition (2014)



1st edition (2012)

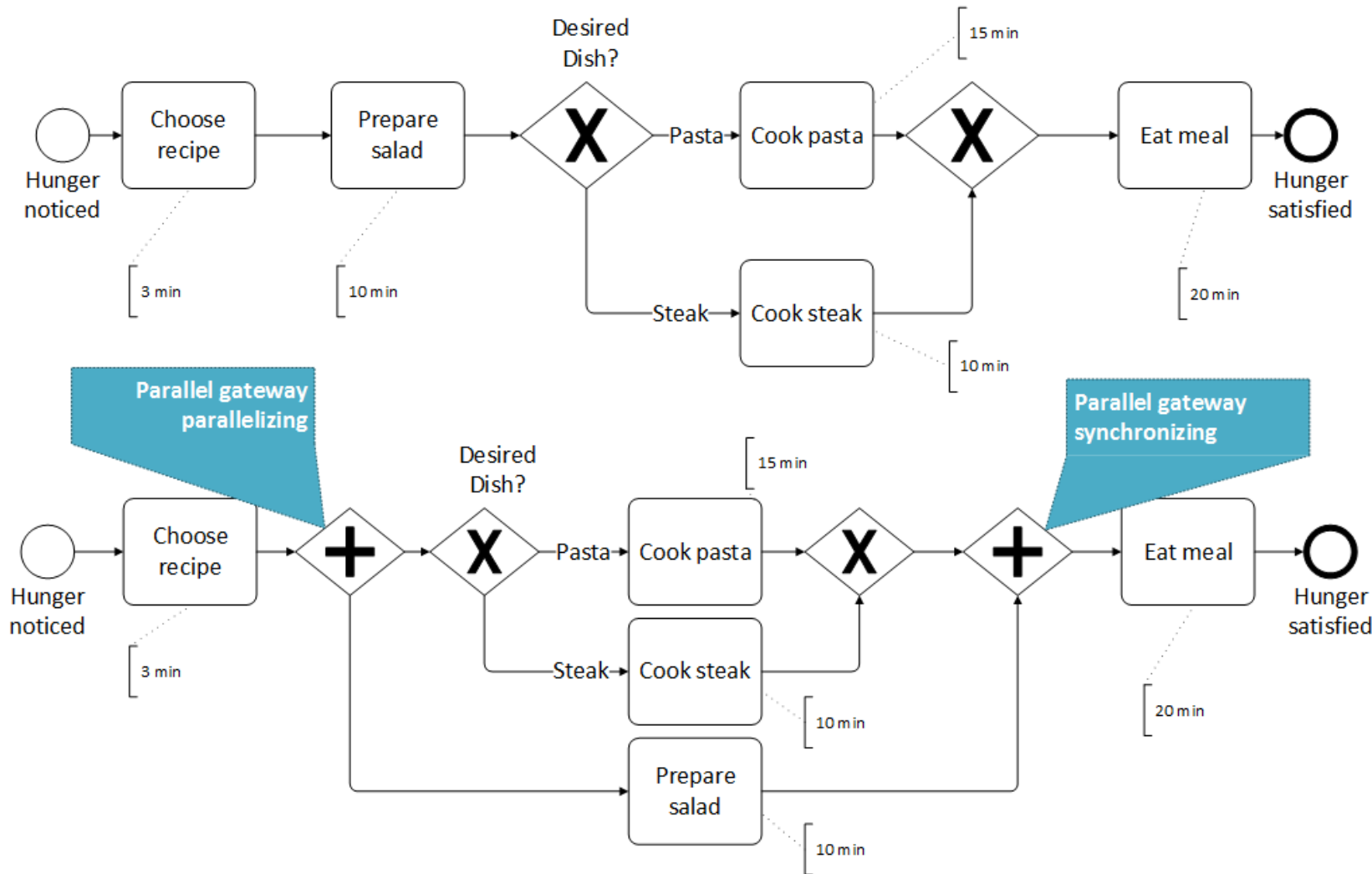


Camunda is an open source platform for workflow and business process management.
You can model and execute BPMN 2.0, CMMN 1.1 and DMN 1.1.

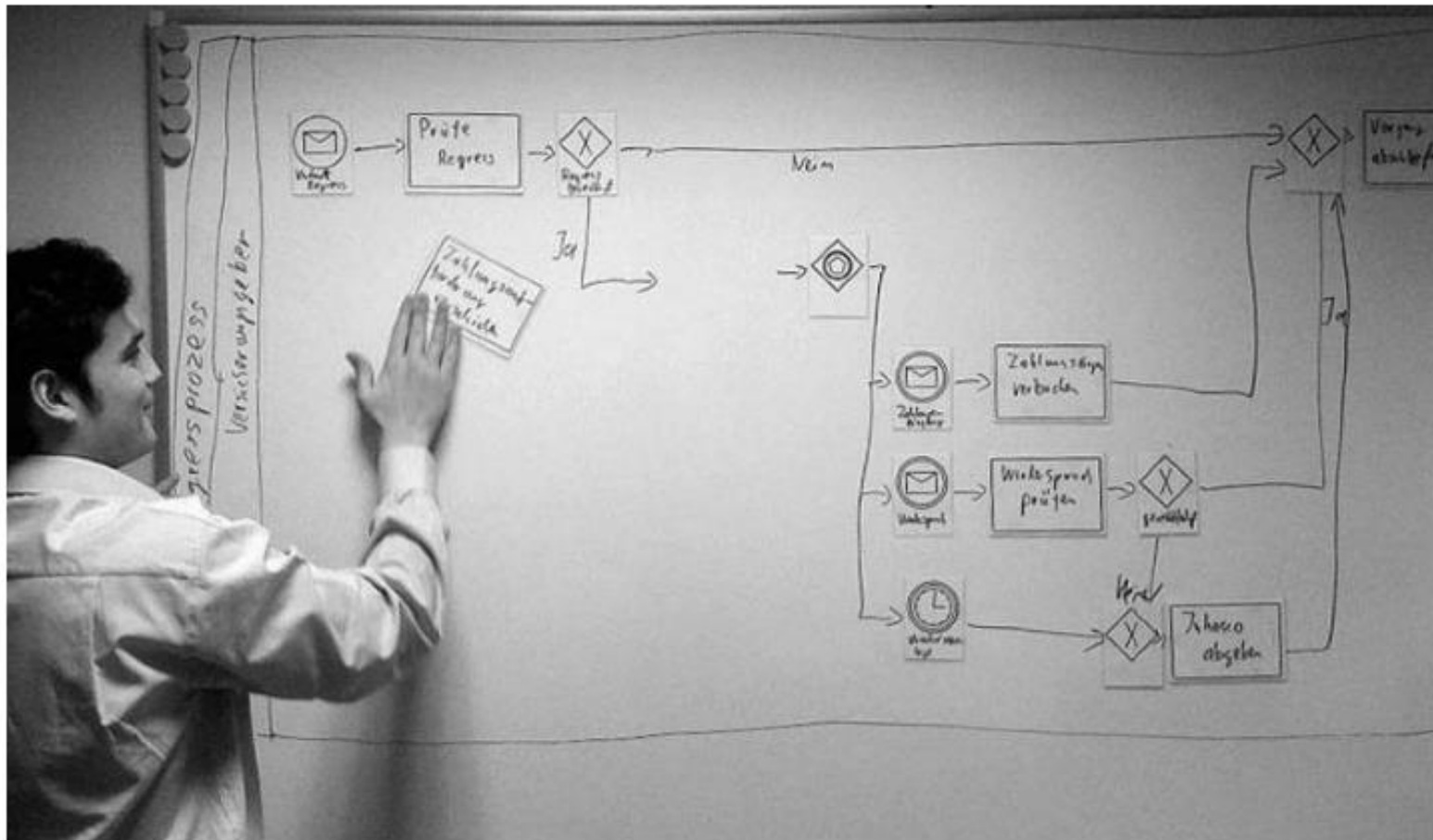
[Download](#)

Currently v7.6.0 · Released in November 2016

Какво ми хареса в тази книга: VRMN в детайли



Идеи, които ми харесаха от първото издание



Идеи, които ми харесаха от първото издание

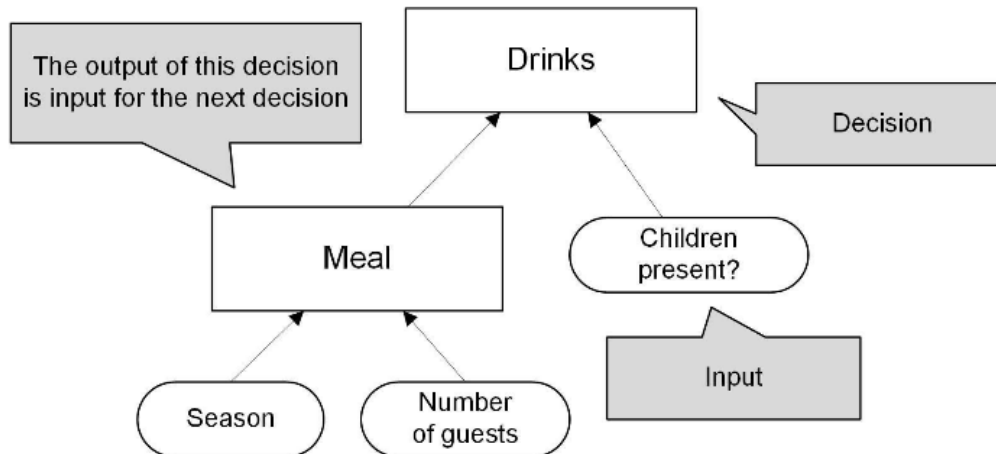


HOBOTO: DMN

Decision Tables

Meal				
U	Season	Vegetarian guests?	Meal	Side dish
1	"Spring"	-	"Asparagus"	"Potatoes"
2	"Summer"	-	"Salad"	"Bread"
3	"Fall"	false	"Steak"	"Fried potatoes"
4	"Winter"	false	"Goulash"	"Rice"
5	"Fall", "Winter"	true	"Pasta"	"Salad"

Decision Requirement Diagrams



FEEL (Friendly Enough Expression Language)

```

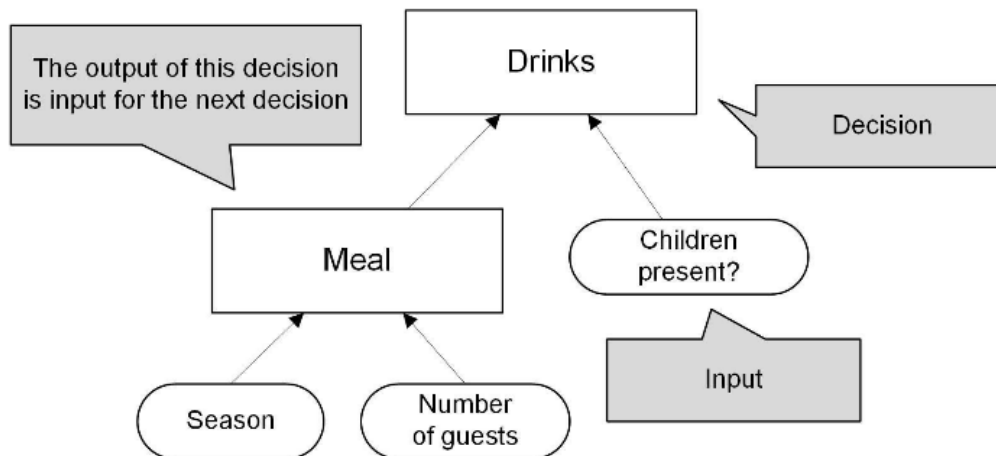
if
  Party.Season = "Summer"
then
  Meal = "Salad"
  
```


DMN

Decision Tables

Meal				
U	Season	Vegetarian guests?	Meal	Side dish
1	"Spring"	-	"Asparagus"	"Potatoes"
2	"Summer"	-	"Salad"	"Bread"
3	"Fall"	false	"Steak"	"Fried potatoes"
4	"Winter"	false	"Goulash"	"Rice"
5	"Fall", "Winter"	true	"Pasta"	"Salad"

Decision Requirement Diagrams



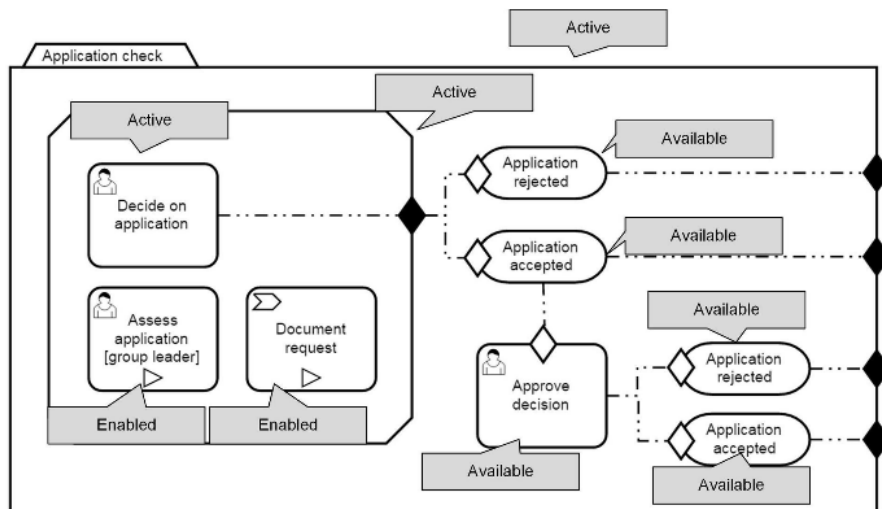
FEEL (Friendly Enough Expression Language)

```

if
  Party.Season = "Summer"
then
  Meal = "Salad"
  
```

CMMN for unstructured case processing

- CMMN has a basic paradigm different from that of BPMN.
- CMMN has no sequenced process flow; it instead models a case in a certain state.
- Depending on the state, some things are possible for processing the case and some things are not, as the case may be.
- Control is exercised predominantly by people.
- CMMN is declarative, and the model states what is to be applied but not how to implement it.



CMMN for unstructured case processing

- **The case**, symbolized by a file folder.
- Several **tasks**. Things are taking place here just as in BPMN.
- A **stage**, which provides additional structuring within the case.
- The achievable milestones, represented by the obround shapes, for intermediate and end results.
- Several **sentries** represented as diamonds. These decide which milestones are reached, but they also control when an additional approval step is needed.

